



Whilst every effort is made to give a fair description, the accuracy of these particulars is not guaranteed, neither do they constitute an offer or contract.

**MATHESONS ESTATE AGENTS** have not tested any apparatus, equipment, fitting or services and so cannot verify that they are in working order. The buyer is advised to obtain verification from their solicitor or surveyor. Measurements are correct to within +/-6 A sonic tape is used. None of the statements contained in these particulars or any of our properties are to be relied upon as a representation of fact.

166 Manor Park Road  
Harlesden  
London  
NW10 4JT  
T: 020 8965 2250  
E: sales@mathesonsestates.com  
www.mathesonsestates.com



## Barry Road, London, NW10 8DE Asking Price £300,000 Leasehold



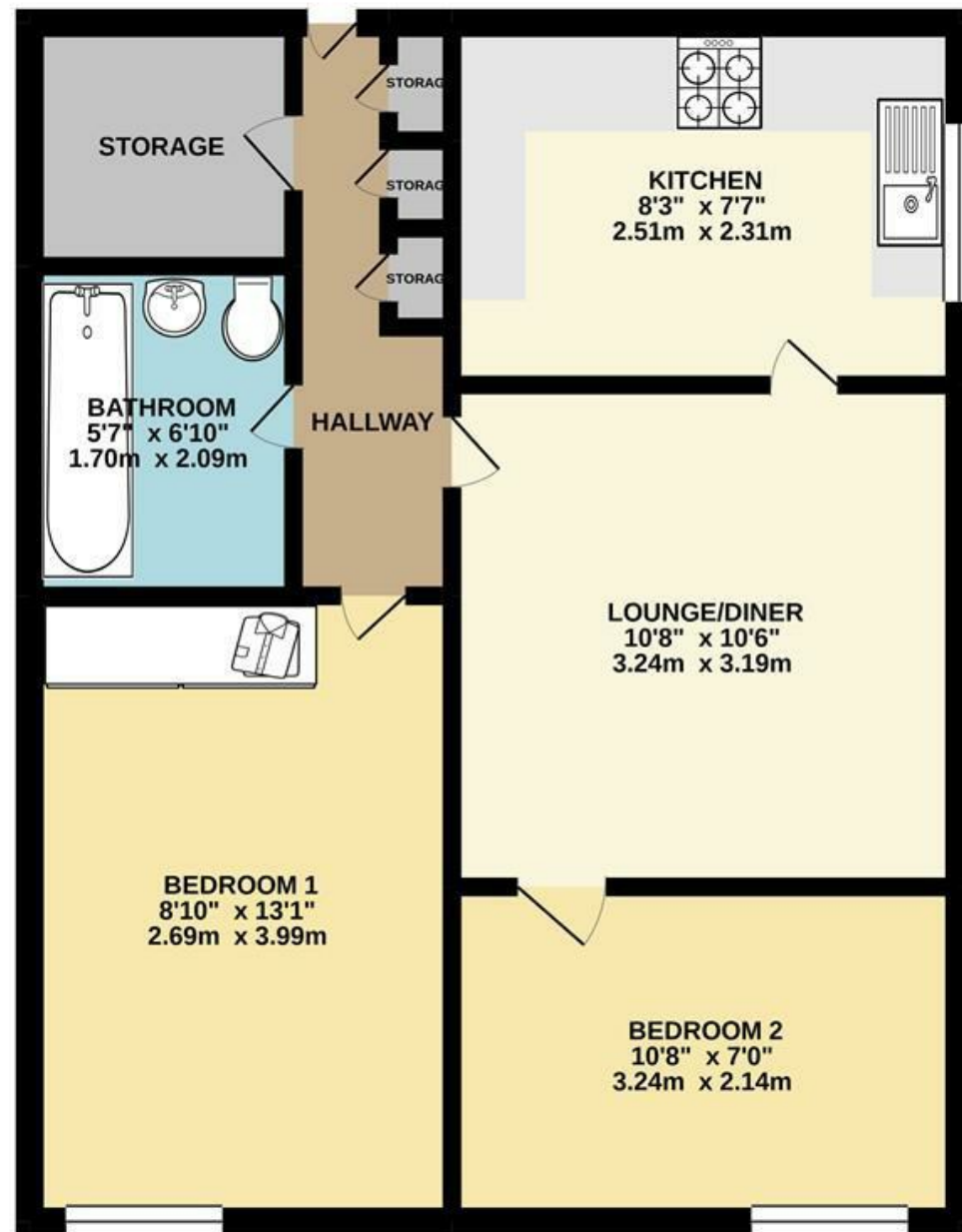
### KEY FEATURES:

- TWO BEDROOM APARTMENT
- TOP FLOOR
- NEW COMBI BOILER
- INTERCOM SYSTEM
- NO UPPER CHAIN
- VACANT
- KEY IN OFFICE
- IDEAL FOR INVESTMENT

CHURCHILLMATHESONS are offering this TWO BEDROOM TOP FLOOR APARTMENT with NO UPPER CHAIN complications situated in this Cul- De Sac location. Ideal for the first time buyer or as an investment as a buy to let. The property benefits from a new COMBI BOILER, INTERCOM SYSTEM, VACANT. An internal viewing is recommended.

The property comprises of; Entrance Hall, Lounge/Diner, Kitchen, Two Bedrooms, Storage Area, Bathroom.  
The total floor area is approximately 48 SQ/M.

## SECOND FLOOR



Whilst every attempt has been made to ensure the accuracy of the floorplan contained here, measurements of doors, windows, rooms and any other items are approximate and no responsibility is taken for any error, omission or mis-statement. This plan is for illustrative purposes only and should be used as such by any prospective purchaser. The services, systems and appliances shown have not been tested and no guarantee as to their operability or efficiency can be given.  
Made with Metroplan ©2021